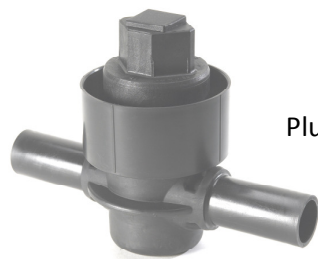




POLYETHYLENE BALL AND PLUG VALVES DIAM 20 ÷ 315 mm FOR GAS AND WATER NETWORKS MANUFACTURED IN PE 100 - SDR 11

PERFORMANCES

- Operating pressure MOP 5 gas / 16 bar water
- Suitable for applications with natural gas, LPG , propane and biogas
- Suitable for applications on water networks. Certified with "ATTESTATION DE CONFORMITE SANITAIRE"
- No metal parts
- Wrench adaptor completely waterproof and dustproof
- Double elastomeric stem seals
- Plug type (for \varnothing 20 ÷ 40 mm) and stem extension are manufactured in a sole moulded piece in high resistance ACETHAL DELRIN 100
- Ball type (for \varnothing 50 ÷ 225 mm) in polypropylene
- No maintenance is required to the valve
- Run torque unchanged for the valve lifetime
- Flow direction: either way
- Valve open/close in 1/4 turn
- Meet the requirements of EN 1555-4-7
- Approved by ITALGAS, ENEL GAS, A2A Milano, GAZ DE FRANCE, ELECTRABEL, GAS NATURAL
- Approved by DVGW, BECETEL
- Available in "kit version" with PVC telescopic pit 500 ÷ 800 mm with cap and stem extension 400 mm



Plug valve 20 ÷ 40



Ball valve 50 ÷ 315



“Kit” with PVC telescopic extension and stem extension

TECHNICAL CHARACTERISTICS																
Diameter	20	25	32	40	50	63	75	90	110	125	160	180	200	225	250	315
SDR	11	11	11	11	11	11	11	11	11	11	11	11	11	11	11	11
Type	Plug valve	Plug valve	Plug valve	Plug valve	Ball	Ball	Ball	Ball	Ball	Ball	Ball	Ball	Ball	Ball	Ball	Ball
Bore	Full	Full	Reduc.	Reduc.	Full	Clearway	Reduc.	Reduc.	Reduc.	Reduc.	Reduc.	Reduc.	Reduc.	Reduc.	Reduc.	Reduc.
Run torque N/m 23 °C	10	10	10	10	5	5	5	10	10	10	35	35	35	95	115	115
Weight Kg	0.75	0.75	0.80	0.80	1.5	1.7	1.9	2	4	4.3	9.6	10	10.8	19.3	37,5	40,8

Note: Valve \varnothing 315 mm available also in full bore version and with built-in reduction gear box.

Bore classification in accordance with EN 736-3/2008 Norm .



DIMENSIONS																
Diameter	20	25	32	40	50	63	75	90	110	125	160	180	200	225	250	315
A	264	264	268	268	327	327	327	327	405	405	540	540	540	920	1568	1568
B	78	78	78	78	164	164	164	164	205	205	263	263	263	320	363	363
C	127	127	127	127	231	231	231	231	290	290	363	363	363	472	561	561
D	68	68	75	75	92	92	92	92	112	112	112	123	123	350	550	620

ACCESSORIES ON REQUEST

- PVC telescopic extension 500-800 mm with cap
- Stem extension 400 mm
- Wrench key 500 mm
- Wrench key 1300 mm
- Reduction gear box for valves $\varnothing 50 \div \varnothing 200$ mm

